

COUNTRY LIFE®

SEPTEMBER 30, 2015

EVERY WEEK

The golden palette of autumn

Tree bark: can you tell the difference?



£3.20

The best new houses for sale today

PLUS Max Hastings, Game Fair crisis
and brilliant blackberry recipes

In with the new

Carla Passino has the pick of newly built properties and restorations in London and in the country



In London

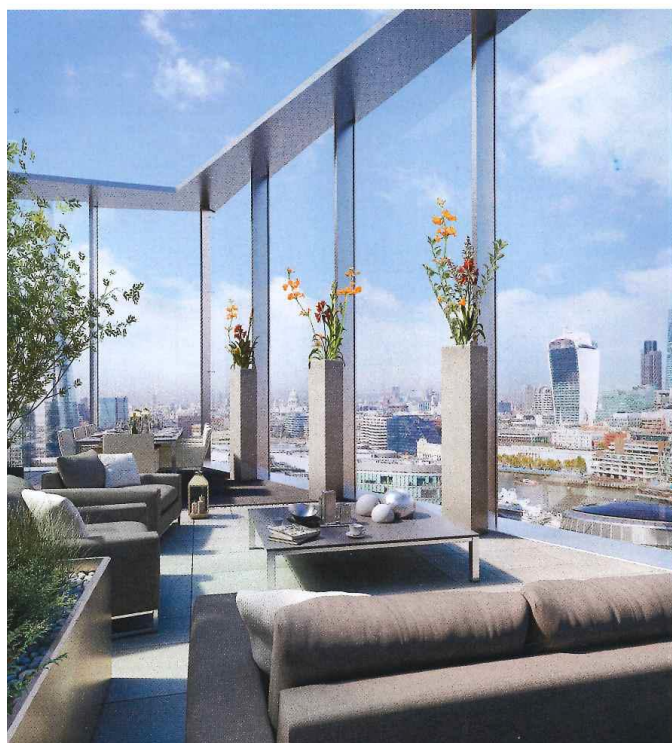
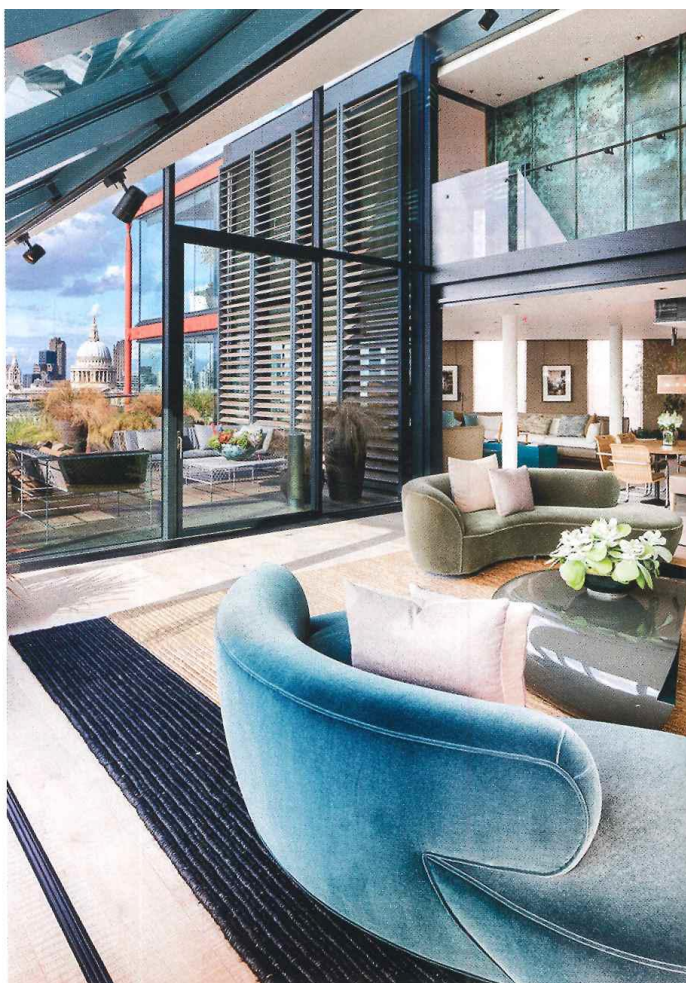
↑ **London SW1** from £2.1 million

Number 1, Palace Street

Best feature The perfect central London setting

Style A modern take on period interiors

Several of the 72 apartments at these converted government offices, due to be completed in December 2017, will enjoy views of Buckingham Palace's gardens. The development spans five eras, ranging from Italianate Renaissance to contemporary, and has leisure facilities and full concierge service. *Northacre* (020-7349 8000; www.northacre.com)



↑ **London SE1** from £5.95 million for a penthouse

NEO Bankside, Sumner Street

Best feature Double-height living areas overlooking the London skyline

Style Uncompromisingly contemporary

The soaring towers of NEO Bankside, on the South Bank, are as cutting-edge as can be. External bracings hug the buildings, removing the need for structural walls and giving complete flexibility to internal spaces, and its vast expanses of glass bring in the views of St Paul's and the Thames. Winter gardens extend the living area while sheltering you from the vagaries of the weather. There is a state-of-the-art gym plus the obligatory 24-hour concierge and security services. *NEO Bankside* (020-7998 1888; www.neobankside.com)

← **London SE1** from £3.45 million for a penthouse

One Tower Bridge, Tower Bridge

Best feature The large, panoramic roof terraces

Style Modern chic

Facing Tower Bridge and the Tower of London, the penthouses at One Tower Bridge make the most of the views with floor-to-ceiling windows and spectacular roof terraces, which have an outdoor kitchen with a dining and seating area. Residents also have access to a beautiful pool and spa, 24-hour concierge service and a virtual golf experience. *The Berkeley Group* (020-7871 0011; www.berkeleygroup.co.uk)